

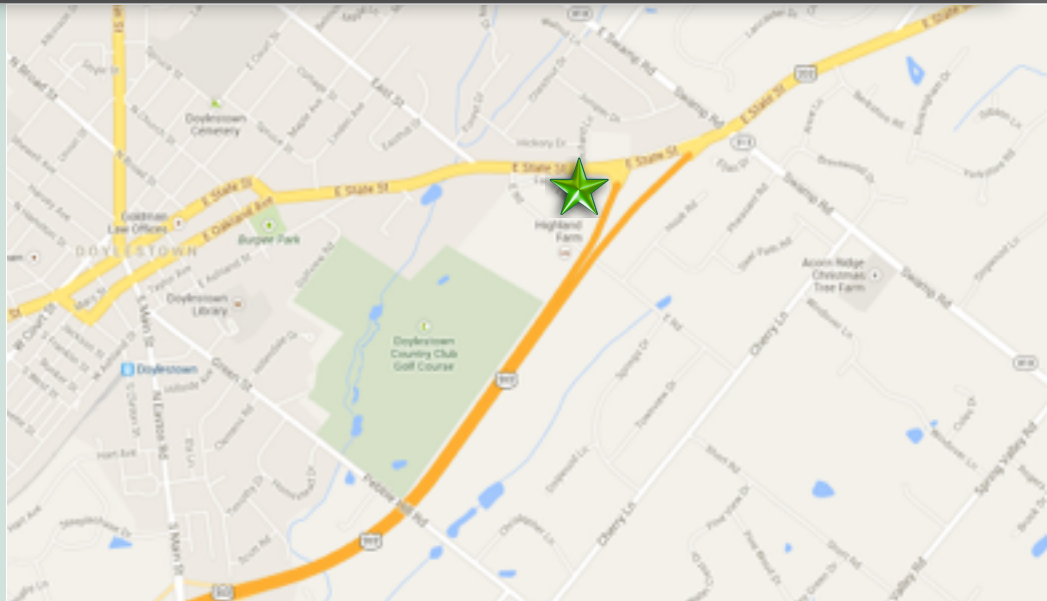


FOR LEASE

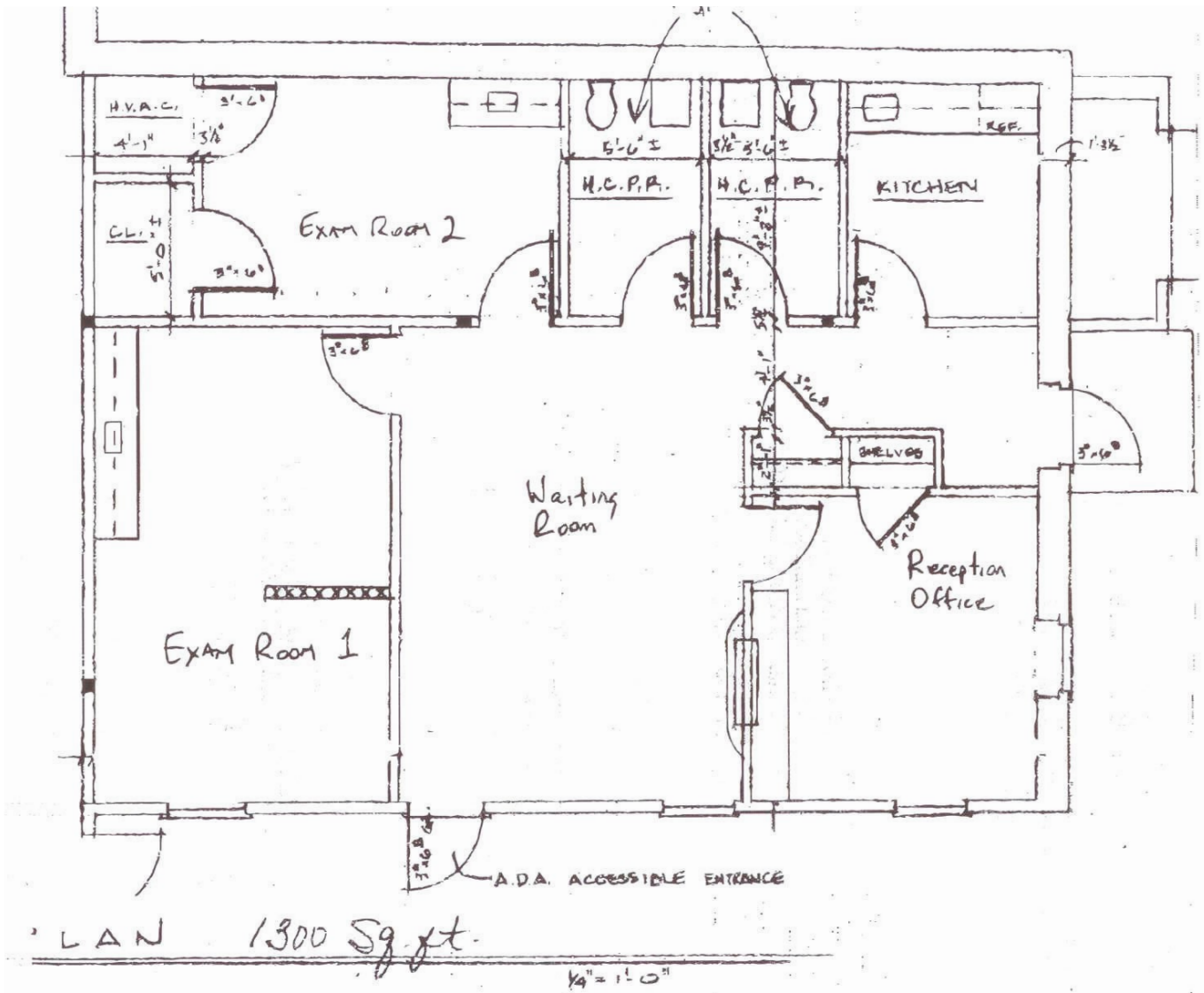
Farm Lane, Doylestown, PA 18901

Current Tenants Include:

- Bucks County Mediation & Arbitration Center
- Doylestown Internal Medicine Associates
- Doylestown Rehabilitation & Sports Medicine, Inc.
- First Niagara Bank
- Horst Insurance
- Strategic Wealth Partners, LLC
- The Goddard School
- Waterstone Mortgage Corporation
- Well of Life Center



Frank Lombardo 215.383.0117
flombardo@greenstreetpa.com



The Farm at Doylestown located in Doylestown, on Farm Lane, offers an exceptional location for business in Bucks County. Located on Farm Lane at the intersection of East Road and US Route 202, only 1/2 miles from Doylestown Bypass Rt 611, and 14 Miles from the PA Turnpike, it is conveniently located to both business and residential communities offering a tremendous marketplace for growth. Just 25 minutes from Trenton and 40 minutes from Center City Philadelphia, The Farm at Doylestown offers a unique corporate setting in the heart of Historic Bucks County.

The unique architecture designed to project a sophisticated professional image nestled in a tranquil landscaped park setting, is clustered to blend with the natural surrounding beauty for which the exclusive community of Doylestown has long been known. Each suite has a private entrance which allows 24-hour, direct access to your business, ample parking space to accommodate your visitors and employees, and individually-metered lighting, heating and air conditioning systems, to efficiently control operational costs.

Demographics (Per LoopNet.com)	1 Mile	3 Miles	5 Miles
2012 Total Population	8,468	32,768	90,338
2012 Households	3,946	12,311	31,455
2012 Avg Household Income	\$89,131	\$114,523	\$127,515
Traffic Count (Per DVRPC.com)	8,281 Vehicles Per Day (2012)		

Frank Lombardo 215.383.0117
flombardo@greenstreetpa.com